



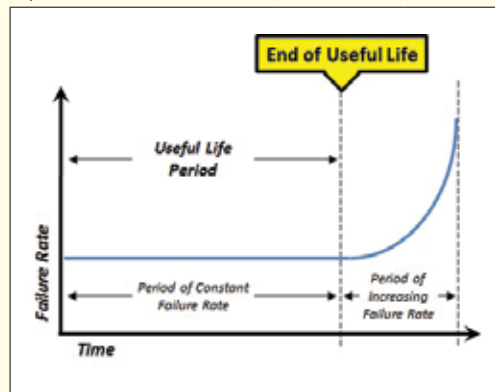
A major facility services provider offering essential mechanical, HVAC systems, and refrigeration maintenance and assessment services to virtually every market segment for 100+ years.

#### EQUIPMENT SERVICE LIFE SPAN

Equipment Type	Years	
Packaged & Split HVAC Units	15	
Chillers	Water-Cooled	20–25
	Air-Cooled/DX	15
Cooling Towers	20	
Condensers (Air-Cooled)	15	
Boilers	Electric	15
	Others	25–35
Pumps	15–20	
Controls	10–15	
Coils (CHW and DX)	20	

The above service life estimate ranges are based on data in the ASHRAE Applications Handbook (A37-2015, Table 4) relevant to commercial and industrial applications. Actual life can vary widely. To learn more, go to the ASHRAE database (<http://xp20.ashrae.org/publicdatabase>).

#### EQUIPMENT FAILURE RATE



## Building Environments Beyond Expectations

**Bahnsen Mechanical Systems (BMS) provides full-service preventive and predictive maintenance HVAC and mechanical solutions that help deliver exceptional value, regardless of the size or complexity of a client's facility.**



#### Technicians respond 24/7/365

##### Services include:

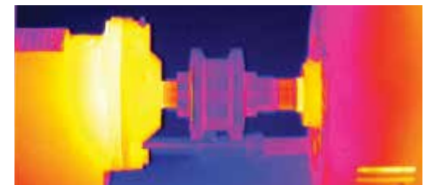
- » HVAC, electrical, and mechanical service and repair
- » Design-build
- » Expert energy analysis, including efficiency testing and earmarking opportunities for upgrades
- » Preventive and predictive maintenance programs
- » Building automation systems

#### BMS maintenance services cover a wide range of systems and equipment, including:

- » HVAC systems
- » Chiller service and retrofits
- » Cooling towers
- » Computer room and data center cooling systems
- » Direct digital controls (DDC)
- » Energy services
- » Pneumatic and electric controls
- » Variable air volume systems
- » Steam and hot water boiler service and retrofit
- » Variable frequency drive applications and service

#### Predictive Maintenance

- » Vibration Analysis is a highly precise procedure to detect deteriorating components that could eventually result in equipment downtime and disrupt operations.
- » Balancing rotating equipment keeps components steady, helping to avoid wear and tear that leads to equipment failures.
- » Laser Alignment by our professionals re-aligns rotating parts and helps to keep equipment performing longer and more efficiently.
- » Infrared Thermography highlights “hot spots” and allows us to see potential problems—that could lead to safety hazards, expensive repairs, or more—before they occur.



**Bahnsen**  
Mechanical Systems  
An EMCOR Company



bahnsenms.com  
beyond@bahnsen.com  
336.760.3111

## About Us

### Preventive Maintenance

BMS offers customers 24/7 preventive maintenance and emergency services using a fleet of service vehicles throughout the Southeastern United States. BMS is a turnkey service provider that offers customized maintenance programs to customers who have specialized equipment that might fall outside the realm of comfort cooling.

#### Preventive maintenance services include:

- » Scheduled inspections tailored to specific client HVAC system needs
- » Annual, semi-annual, and quarterly tests and inspections
- » Monthly equipment performance inspections
- » Filter and belt maintenance including cleaning, aligning, calibrating, tightening, adjusting, and lubricating

#### Preventive maintenance benefits include:

- » Energy savings
- » Minimal downtime
- » Lower operating costs
- » Extended equipment life
- » Consultative facility reviews
- » Advanced technology
- » Single-source solutions
- » Customer First philosophy



### Chiller Services

Properly maintained chillers provide critical comfort needs to building occupants, while helping reduce operating costs.

#### BMS chiller services include:

- » Centrifugal, reciprocating, and screw machines
- » Central plant optimization
- » Chiller replacement
- » Customized preventive maintenance programs
- » Refrigerant conversion
- » Retubing
- » Tube cleaning
- » Temporary chiller installation

### Cooling System Equipment Assessment

BMS can perform a chiller plant/cooling equipment health assessment that includes:

- » Standing leak test
- » Review running parameters
- » Review alarm history
- » Download database
- » Check system flows
- » Inspect electrical systems
- » Inspect control systems
- » Inspect cooling tower or condensers
- » Perform running inspection
- » Report findings and make recommendations to help improve equipment operation

### History

Bahnson Mechanical Systems (BMS) is the core descendant of the original Bahnson Company, which began in 1915, providing humidity controls and systems for the tobacco industry and textile manufacturers.

Over the years, BMS has evolved into a diversified designer, supplier, installer, and servicer of engineered air systems and components, which are designed to solve problems related to plant environmental conditions. BMS has earned the trust of its clients and enjoys a 90%+ repeat customer rate.

### BMS Mission Statement

Bahnson Mechanical Systems stands behind 100+ years of mechanical systems experience to deliver the right mechanical solutions for building environments and operations.

### Safety Is Job #1.

EMCOR's safety performance consistently remains strong year after year with a current rate that surpasses competitors 60–75% and ranks 66% lower than the Bureau of Labor Statistics industry average.

(Source: Bureau of Labor Statistics Industry Average for Specialty Contractors NAICS 238, 2012-2017)

**WHILE YOU WORK, INJURIES LURK.**

**BE VIGILANT!**

### Harnessing the Power of a Fortune 500® Leader

A Fortune 500® company, EMCOR Group, Inc. (NYSE: EME) is a leader in mechanical and electrical construction, industrial and energy infrastructure, and building services. With unmatched experience, broad reach, and local execution, EMCOR Group specializes in planning, installing, operating, maintaining, and protecting the sophisticated and dynamic systems that create facility environments.

This includes systems such as electrical, mechanical, lighting, air conditioning, heating, security, fire protection, and power generation.

EMCOR works in virtually every sector of the economy for a diverse range of businesses, organizations, and public sector clients. Combining the strength of an industry leader with the knowledge and care of over 170 locations, the 33,000+ skilled employees of EMCOR have undertaken and completed some of the country's most ambitious projects.

## How Can We Help You?

### Bahnson Mechanical Systems Corporate Office

4731 Commercial Park Court, Clemmons, NC 27012  
T 336.760.3111 F 336.760.1548

100-D Forsyth Hall Drive, Charlotte, NC 28273  
2550 Empire Drive, Winston-Salem, NC 27103  
52 Pelham Davis Circle, Greenville, SC 29615

[beyond@bahnson.com](mailto:beyond@bahnson.com) [www.bahnsonms.com](http://www.bahnsonms.com)



**Bahnson**  
**Mechanical Systems**  
**An EMCOR Company**