

PPM

Total Facilities Maintenance & Construction Services

PPM is a leading industrial facilities management, maintenance, and construction services provider for the pulp and paper, chemical, power generation, and general manufacturing industries.



 **PPM**
An EMCOR Company



PPM— Total Facilities Management & Maintenance.

Many of our clients have worked with PPM **15+ years.**

PPM’s award-winning safety record is the culmination of working hard, maintaining discipline, and keeping safety in the forefront of everything we do.

Our Quality Assurance Program helps ensure we meet customer regulatory requirements and manage costs and risks for consistent, measurable, and repeatable quality.

Our Services

- » Industrial maintenance
- » Supplemental maintenance
- » Capital construction
- » Outages/shutdowns/turnarounds
- » Mechanical services
- » Electrical services
- » Civil services
- » Facilities services

Our Markets

- » Pulp and paper
- » Chemical
- » Power generation
- » Mining
- » Food processing
- » General manufacturing
- » Heavy industrial
- » Petrochemical
- » Pharmaceutical
- » Tire manufacturing

A SINGLE-SOURCE SOLUTION BUILT ON EXPERIENCE

PPM is a leading industrial mechanical, electrical, and civil construction services provider for the fossil and nuclear power, pulp and paper, chemical, power generation, and general manufacturing industries.

We provide a full range of industrial facilities maintenance and process maintenance services that can increase our client’s return on their investment. The knowledge we have gained from providing almost four decades of plant facilities services gives PPM unique perspectives on a plant’s maintenance issues and profitability.



The broad range of our knowledge and experience in industrial plant maintenance services—which includes civil, mechanical and electrical (M&E), and power construction and shutdown/outage services—enables us to respond to the particular needs of each client, regardless of job size, in the most effective way possible. We are also constantly adapting to the ever-changing regulatory environment. At PPM, we are capable of making the fast changes often required by shifts in project schedules while still considering the overall project budget.

A Recognized Safety Leader

At PPM, our safety record is no accident. It’s the culmination of years of hard work, discipline, and a determined effort to keep safety at the forefront of everything we do. We’re proud of our award-winning record and strive daily to continue our quest as one of the safest contractors in America.

The Importance of Self-Performance

Self-performing services help to improve scheduling, energy efficiency, response time, and cost-control measures. PPM can self-perform virtually any of our facilities management and process maintenance services, making us one of the most highly sought after industrial facilities maintenance companies.

Quality Assurance Program

Our Quality Assurance Program helps ensure that we meet customer, statutory, and regulatory requirements; support our zero injury values; manage costs and risks; and continuously improve our processes and methods. This helps us enable consistent, measurable, and repeatable quality on every mechanical and electrical construction and plant maintenance project.

Backed by decades of experience, PPM helps clients meet the complex challenges inherent in today’s manufacturing and industrial facilities environments.

Total Facilities Maintenance & Construction Services

Industrial Maintenance

Employing the latest in advanced technologies, our maintenance services combine strategic management processes, predictive/preventive building maintenance, and capital planning to enable practical and effective asset management partnerships. With our full-service industrial maintenance agreement, we'll take total responsibility for planning and executing all of your plant's maintenance tasks. PPM's full-service contract package can increase asset effectiveness while still helping keep tight control of costs. Each contract is measured against Key Performance Indicators (KPIs) developed collaboratively.

Our plant maintenance capabilities include:

- » Project management
- » Preventive and predictive maintenance
- » Inventory control
- » Subcontractor management
- » Instrumentation and controls
- » Electrical services
- » Equipment assembly and maintenance
- » Rigging
- » Scaffolding and shoring
- » Pipefitting
- » Welding
- » Structural steel construction/replacement
- » Consolidated contracts
- » Soft services including janitorial and grounds keeping

We can provide a total building maintenance solution for many types of craft labor, including:

- » Millwright
- » Rigging
- » Mechanical piping and pipefitting
- » Welding in all processes (including alloy and R-stamp welding)
- » Sheet metal design fabrication and installation
- » Electrical services
- » Controls systems

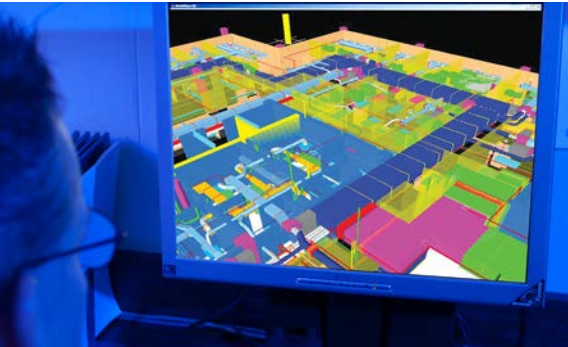


PPM's full-service contract package can increase asset effectiveness and help keep tight control of costs.



Total Facilities Maintenance & Construction Services

Our employees are screened, evaluated, trained, and performance graded. Top-level management helps ensure the success of these valued crafts workers.



Some of our benefits include:

- » An experienced management team
- » Proven payroll and HR capabilities
- » A seasoned workforce of trade professionals, including day laborers
- » Access to a wide network of people
- » Advanced systems
- » 8,100 graded crafts workers
- » Experience and knowledge from completing thousands of projects in over 100 U.S. industrial facilities
- » Ability to provide additional personnel on short notice
- » Lower total cost of ownership on equipment that we maintain
- » On-site facilities management team
- » Maximizing success through proven processes and procedures

Capital Construction

Mechanical, Electrical, and Civil Construction Solutions

PPM is your single-source industrial mechanical, electrical, and civil construction service provider. We have the project-control systems in place to perform construction projects ranging from small capital improvements to major plant expansions.

By providing all crafts workers, PPM provides a single-source industrial mechanical, electrical, and civil construction solution that can lower the total cost of ownership, streamline construction coordination, and provide a single point of contact for managing projects.

Supplemental Maintenance

Industrial Supplemental Maintenance and Craft Support Services

Whether you're looking for experienced crafts workers or planning and scheduling support, PPM's Industrial Supplemental Maintenance team has a solution that will work for you. PPM has demonstrated proven success at hundreds of industrial facilities across the country for nearly 40 years.

For you, that means improved facility care and higher levels of productivity, which can reduce the cost of ownership.

Total Facilities Maintenance & Construction Services

Outages/Shutdowns/Turnarounds

Preventive Plant Maintenance Services Through Scheduled Shutdowns & Outages

» Outages

We use scheduled plant outages to investigate and identify building systems maintenance issues that could affect plant availability. We conduct thorough visual examinations, service inspections, and perform operational checks and tests to establish M&E equipment maintainability, reliability, and availability. Our outage services can enhance a facility's profitability by making the most productive use of capital resources.

» Shutdowns

To facilitate shutdown support in one agreement, PPM offers full-service industrial maintenance plans that allow for continuity in capital project/shutdown management and procedures. During the critical period leading up to the shutdown, having a full-service industrial maintenance plan allows our customers to focus on the upcoming shutdown tasks and spend less time on contract management.

» Turnarounds

While no two turnarounds are ever the same, we can manage the entire turnaround from start to finish, performing heat exchanger maintenance, vessel inspection, and valve and piping replacements. We also understand that turnarounds are costly, so we work quickly, efficiently, and safely.

PPM offers the following industrial shutdown, turnaround, and outage maintenance and management services:

- » On-site facilities maintenance team managers to focus on client communication
- » Installation and repair/replacement of M&E equipment on shutdown work
- » Assistance with planning and scheduling, before and during an outage
- » Outage work ranging from one-day machine-specific outages to several week plant cold outages



- » Preventive plant maintenance repair procedures
- » Emergency response to equipment breakdowns, providing quick mobilization, 24/7

Civil Construction

PPM has the extensive workforce and solid financial resources to self-perform a competitive range of industrial civil construction services—including building foundations, installing underground piping, and attending to all masonry needs that surface. We also perform demolition, retrofitting, and excavation. Our industrial civil engineering services include:

- » Demolition of existing foundations
- » Retrofitting existing foundations to fit new equipment
- » Reinforcing older building foundations
- » Excavation and compaction
- » Underground utilities
- » Engineered form systems
- » Rebar installation
- » Complex reinforced cast-in-place foundations
- » Precision anchor bolt and embed placement
- » Reinforced slab-on-grade placement and finish

PPM's full-service plant maintenance and shutdown planning allow for plant/facilities management and procedures continuity so that shutdown support can be handled within the same agreement.



Total Facilities Maintenance & Construction Services

Our superior performance has resulted in many of our clients working with PPM for 15+ years.



Mechanical

Industrial Mechanical Systems, Installation & Maintenance

Whether you're looking for a partner to handle all of your industrial mechanical construction services or a vendor to maintain your boiler, PPM has a solution for you. Our industrial mechanical construction services include:

- » Boiler maintenance and construction
- » Package, power, and cogeneration boiler repair
- » Manufacturing process machinery design/build services
- » Conveyor equipment
- » Mechanical piping and pipefitting services
- » Pump rebuilds and alignments
- » Valves
- » Conveyors
- » Welding
- » Sheet metal design, fabrication, and installation
- » All related mechanical systems

Electrical

Industrial Electrical Systems, Installations & Maintenance

Our electrical services experience spans a range of power plant and manufacturing industries, including pulp and paper facility, power generation plant construction, petrochemical, food processing, pharmaceutical, and heavy industrial plants.

In addition to from-the-ground-up construction, our highly skilled construction management and technical teams perform yearly facilities electrical maintenance and expansion projects, critical path turnarounds, emergency response services, and staff augmentation services. Our services include:

- » System installation
- » System maintenance
- » Calibration
- » Wiring

- » Preventive maintenance
- » Loop check
- » Commissioning services
- » Start-up support
- » Configuration planning and scheduling
- » Troubleshooting

We also offer expertise in the electrical design and construction of industrial fiber optics and copper cabling for voice data, process control, and video systems.

Facilities Services

Building Maintenance Services

Our facilities services—which include building management and maintenance services, landscaping, janitorial services, and more—are designed to fit customer-specific requirements, no matter how specialized they seem.

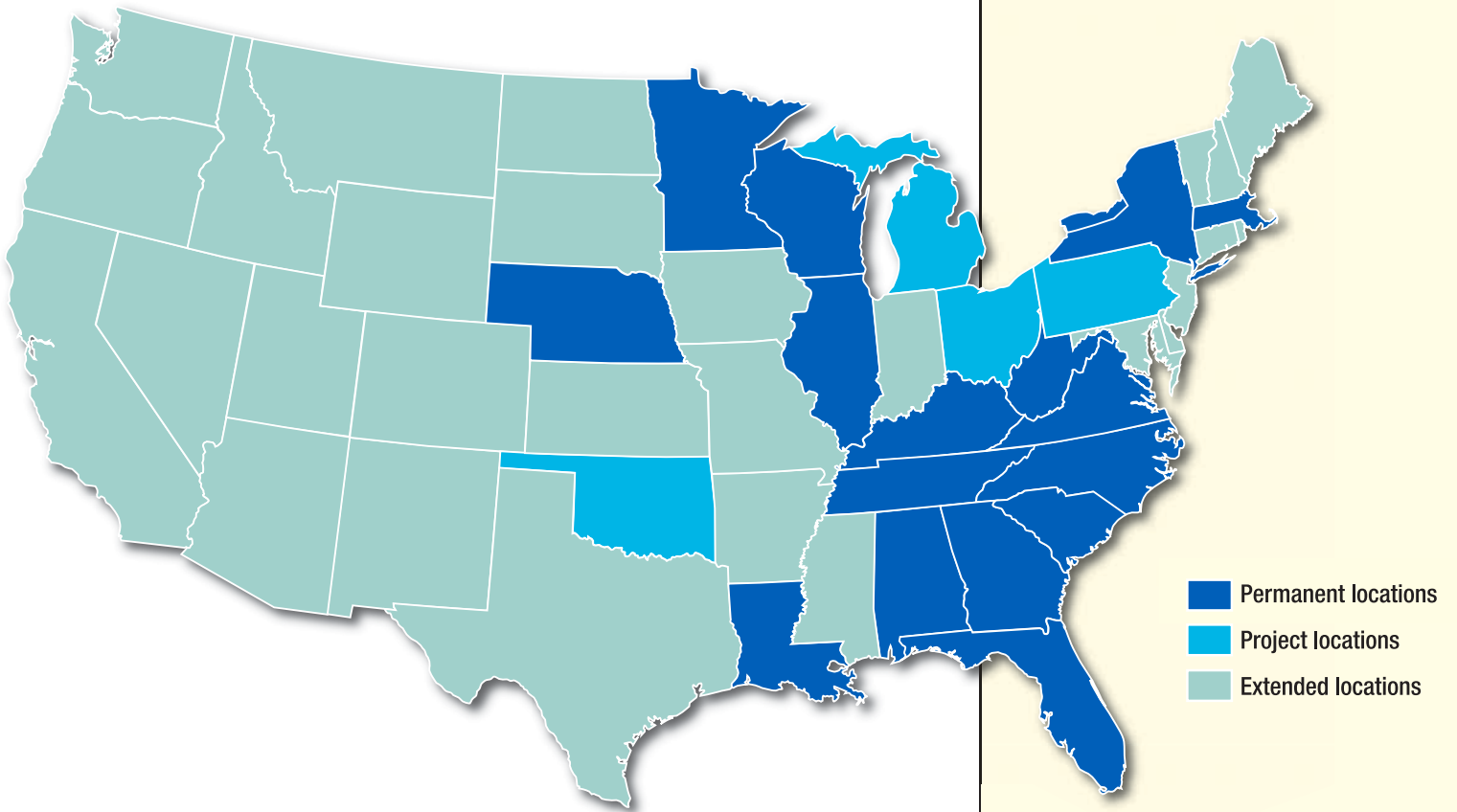
PPM's facility services division can handle tasks that range from clean-room maintenance to sanitation services to waste management. We even supply commercial landscaping and grounds services while also providing building maintenance personnel whenever needed.

Employing the latest in advanced technology solutions—handheld wireless facilities systems, CMMS (Computerized Maintenance Management System)—our facilities services include:

- » Coating services
- » Energy management solutions
- » Facility maintenance
- » Janitorial services
- » Commercial landscaping and grounds maintenance
- » Building preventive/predictive maintenance
- » Production maintenance and support sanitation
- » Waste management
- » Scaffolding services
- » Scheduling and planning
- » Capital planning

Geographical Reach

Serving the U.S. in industrial mechanical, electrical, and civil construction services.



PPM

An EMCOR Company

Working with American Industry



Harnessing the Power of a Fortune 500® Leader

EMCOR Group, Inc. (NYSE: EME) is a Fortune 500® leader in mechanical and electrical construction, industrial and energy infrastructure, and building services for a diverse range of businesses.

EMCOR Group, Inc., is ranked #1 "World's Most Admired" in the Engineering and Construction Industry for 2018 by Fortune®. For 10 consecutive years EMCOR has been named amongst the Top 5 "World's Most Admired" Companies.

EMCOR builds, powers, services and protects the sophisticated and dynamic systems that create facility environments in virtually every sector of the economy for many of the world's most successful organizations. By planning, installing, operating, and maintaining a wide range of facilities and systems, ~34,000 employees at 170 locations help clients increase productivity and optimize their businesses.

www.emcorgroup.com

PPM

Total Facilities Maintenance & Construction Services

Serving the Communities Where We Live, Work, and Play

Taking KidSafety to the Streets™

As part of EMCOR's Taking KidSafety to the Streets Program,™ PPM is proud to serve the community through its work with the National Center for Missing & Exploited Children®. By prominently displaying posters of missing children on our company and personal vehicles, and by responding quickly when a child is reported missing within facilities where we work, we help recover missing children and promote child safety.



Safety Is Job #1.

Safety that Beats the National Average

PPM is passionate about safety and quality. EMCOR's safety performance is far better than the Bureau of Labor Statistics industry averages, with a rate of injury that is consistently 60%–75% lower than our competitors.

(Source: Bureau of Labor Statistics Industry Average for Specialty Contractors NAICS 238, 2004-2012)

PPM 180530

Contact us today for more information about our total facilities maintenance and construction services.

PPM

1127 South Main Street, Society Hill, SC 29593
T 843.378.4700 emcor_info@emcorgroup.com

www.morppm.com

Mailing Address

P.O. Box 118, South Main Street
Society Hill, SC 29593



PPM

An EMCOR Company