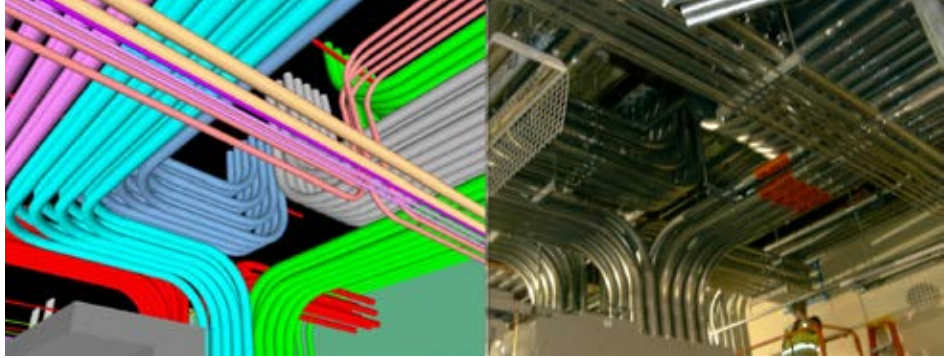


# GIBSON ELECTRIC & TECHNOLOGY SOLUTIONS ELECTRICAL CONSTRUCTION

**HUNDREDS  
OF PROJECTS.  
ELEVEN MAJOR  
MARKETS SERVED.**

- **Commercial**
  - Office Buildings
  - Retail
  - Mid and High Residential
  - Trading Firms
- **Entertainment/Hospitality**
  - Arenas
  - Hotels/Casinos
- **Healthcare**
- **Education**
- **Manufacturing**
  - Private Sector
- **Mission Critical Facilities**
- **Public/Government**
- **Technology**
  - Data Centers/Call Centers
  - Telecommunications
- **Transportation**
- **Warehouses/Distribution Centers**
- **Water Management**

**Reliable. Experienced. Innovative.  
Exceptional Electrical Construction Services.**



**Gibson Electric & Technology Solutions** is an ISO 9001:2015-certified electrical construction firm specializing in commercial electrical and telecommunication infrastructure design, structured cabling installation and maintenance, electrical power distribution systems, data transmission systems, and distributed antenna systems (DAS).

Gibson Electric offers a complete array of reliable, expert commercial electrical services for projects ranging from small to large, simple to complex. Gibson Electric's combination of innovative construction management and electrical systems technical expertise means their experienced technicians can handle virtually any job.

### **From One Light to One-Thousand, Single-Source Electrical Solutions.**

Offering a full suite of electrical construction services, Gibson Electric has the capabilities and expertise needed to handle both large-scale installations and small-scale service jobs. Regardless of size or scope, Gibson Electric remains committed to customer satisfaction and strives to meet exacting standards and rigid specifications on every project.

### **Comprehensive Services. For Virtually Any Electrical Construction Need.**

Gibson Electric's wide array of electrical construction services include, but are not limited to:

- Building Information Modeling (BIM)/Computer-Aided Design (CAD)/Coordination
- Electrical Construction
- Tenant Build-Outs and Renovations
- Mission Critical
- Structured Cabling
- Distributed Antenna Systems (DAS)
- Pre-Fabrication
- Riser Management
- Design-Build
- Renewable Energy
- Industrial
- A/V Installations
- Site-Based Maintenance
- Service/Special Projects
- Central Office/DC Power Wiring

# GIBSON ELECTRIC & TECHNOLOGY SOLUTIONS ELECTRICAL CONSTRUCTION



## **Certified Technicians. Cutting-Edge Technology. Superior Service.**

Gibson Electric is committed to offering professional services and a safe work environment. In order to fulfill this commitment, Gibson Electric hires qualified commercial electricians and supports them with industry-leading technology. Both field and office staff are employed on an ongoing basis in order to encourage top performance, and Gibson Electric's field electricians undergo a thorough apprenticeship in order to develop hands-on industry experience.

## **Safety Is Job #1. And #2, and #3, and #4...**

Gibson Electric, an EMCOR company, is passionate about safety and quality. EMCOR's safety performance is far better than the Bureau of Labor Statistics industry averages, with a rate of injury that is consistently 60%–75% lower than competitors.

(Source: Bureau of Labor Statistics Industry Average for Specialty Contractors NAICS 238, 2004-2012)

## **Harnessing the Power of a Fortune 500® Leader**

EMCOR Group, Inc. (NYSE: EME) is a Fortune 500® leader in mechanical and electrical construction, industrial and energy infrastructure, and building services for a diverse range of businesses.

EMCOR Group, Inc., is ranked #1 "World's Most Admired" in the Engineering and Construction Industry for 2018 by Fortune®. For 10 consecutive years, EMCOR has been named amongst the Top 5 "World's Most Admired" Companies.

EMCOR builds, powers, services, and protects the sophisticated and dynamic systems that create facility environments in virtually every sector of the economy for many successful organizations. By planning, installing, operating, and maintaining a wide range of facilities and systems, 34,000+ employees at 170 locations help clients increase productivity and optimize their businesses.



## **HOW CAN WE HELP YOU?**

**Gibson Electric & Technology Solutions**  
3100 Woodcreek Drive  
Downers Grove, Illinois 60515-5427

**T: 630.288.3800**  
**F: 630.743.2100** Electrical Division  
**F: 630.743.2101** Technologies Division  
[www.gibsonelec.com](http://www.gibsonelec.com)